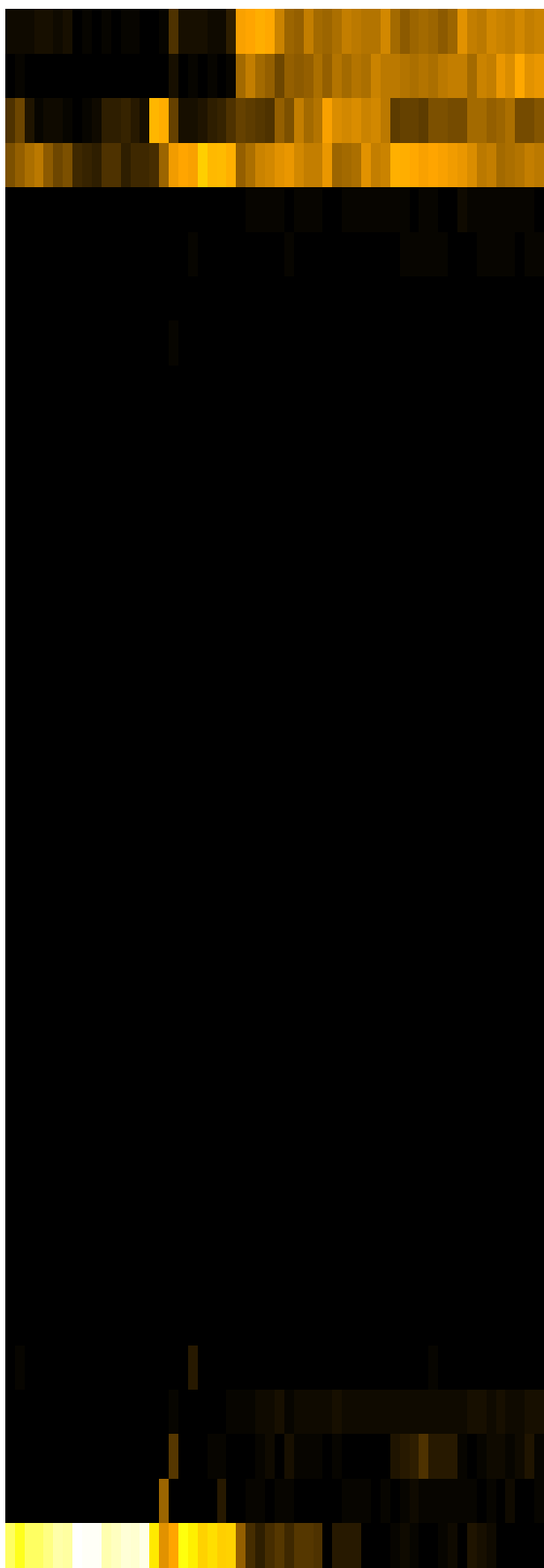
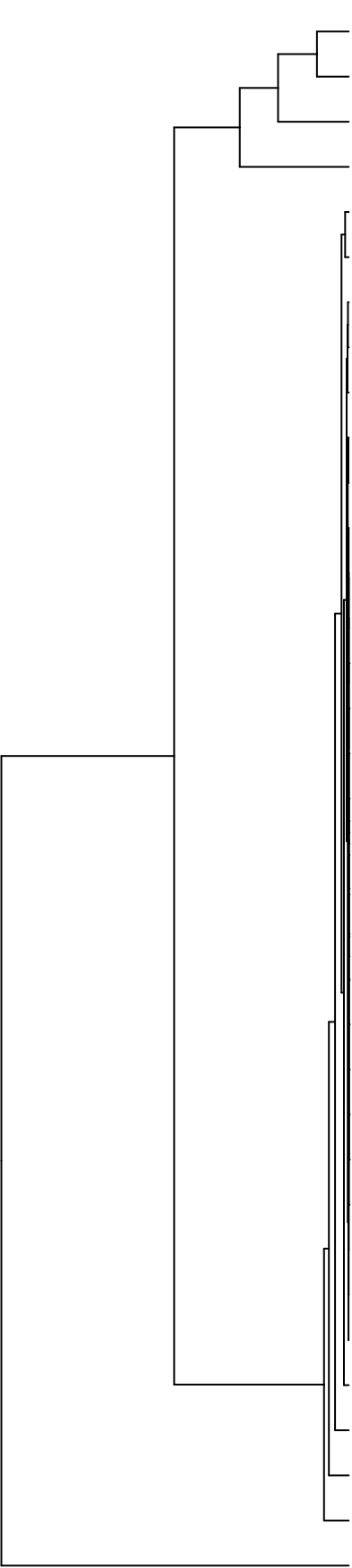


Group006  
 H Final -PMA  
 J Final -PMA



- Veillonellaceae
- Pasteurellaceae
- Neisseriaceae
- Streptococcaceae
- Actinomycetaceae
- Gemellaceae
- Leptotrichiaceae
- Campylobacteraceae
- Porphyromonadaceae
- Lachnospiraceae
- Prevotellaceae
- Burkholderiaceae
- Atopobiaceae
- Absconditabacteria\_(SR1)\_[F-1]
- Propionibacteriaceae
- Flavobacteriaceae
- Phyllobacteriaceae
- Pseudomonadaceae
- Moraxellaceae
- Yersiniaceae
- Sphingomonadaceae
- Microbacteriaceae
- Rhizobiaceae
- Weeksellaceae
- Hymenobacteraceae
- Saccharibacteria\_(TM7)\_[F-2]
- Mycobacteriaceae
- Saccharibacteria\_(TM7)\_[F-1]
- Erysipelotrichaceae
- Comamonadaceae
- Staphylococcaceae
- Carnobacteriaceae
- Fusobacteriaceae
- Micrococcaceae
- Enterobacteriaceae

- F28914.S455
- F28914.S469
- F28914.S467
- F28914.S468
- F28914.S603
- F28914.S453
- F28914.S451
- F28914.S466
- F28914.S601
- F28914.S602
- F28914.S604
- F28914.S612
- F28914.S293
- F28914.S294
- F28914.S312
- F28914.S308
- F28914.S306
- F28914.S133
- F28914.S289
- F28914.S292
- F28914.S131
- F28914.S145
- F28914.S129
- F28914.S146
- F28914.S295
- F28914.S151
- F28914.S150
- F28914.S152

Samples

Family